



Total Solution Provider in Saw Device

SL08702AV

87.50 MHz IF SAW Filter

2.4 MHz Bandwidth

Revision 0: 5. Dec. 2008



-
- Electrical Characteristics
 - Package Dimensions
 - Testing Environment
 - Frequency Characteristics
-

SAWNICS Inc.

460 Cheonheung-ri, Seonggeo-eup, Cheonan-si, Chungcheongnam-do, 330-836 / Korea.
Tel: +82 41 550 9372 / Fax: +82 41 550 9399 / www.sawnics.com



□ Electrical Characteristics

Maximum Ratings

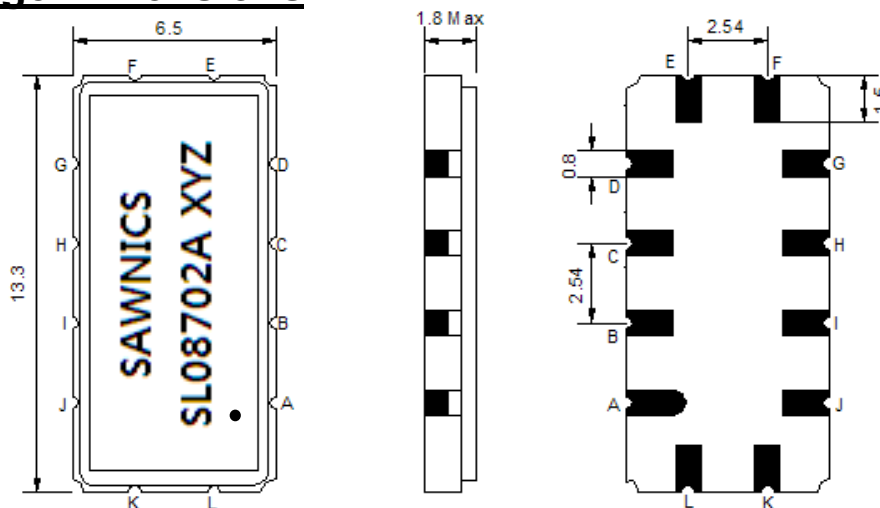
Parameters Description	Unit	Minimum	Typical	Maximum
Operation Temperature Range	°C	-20	-	70
Storage Temperature Range	°C	-40	-	85
Maximum DC Voltage	V	-	-	10
Maximum Input Power	dBm	-	-	10
Source Impedance (single ended) ⁽¹⁾	Ω	-	50	-
Load Impedance (single ended) ⁽¹⁾	Ω	-	50	-
Package type & size	V			
Length x Width	mm ²	-	13.3 x 6.5	-
Height	mm	-	-	1.8

Electrical Specification

Parameters Description	Unit	Minimum	Typical	Maximum
Center Frequency (Fo)	MHz	87.38	87.50	87.62
Insertion Loss at Fo	dB	-	10.5	13.0
Group Delay Variation (Fo±500KHz)	nsec	-	15	50
Absolute Delay at Fo	usec	-	1.32	-
Passband Ripple Variation (Fo±500KHz)	dB	-	0.1	0.6
Bandwidth at -1dB	MHz	2.0	2.4	-
Bandwidth at -3dB	MHz	-	2.9	-
Bandwidth at -40dB	MHz	-	4.9	5.5
Ultimate Rejection	dB	40	48	-
Phase Linearity(Fo±500KHz)	deg _{p-p}	-	1.0	5.0
Temperature Coefficient	ppm/°C	-	-18	-

Notes : (1) With Matching Network (Ref. Testing Environment Circuit as shown below).
Those impedances could be modified with different impedance values and/or structures, if necessary.

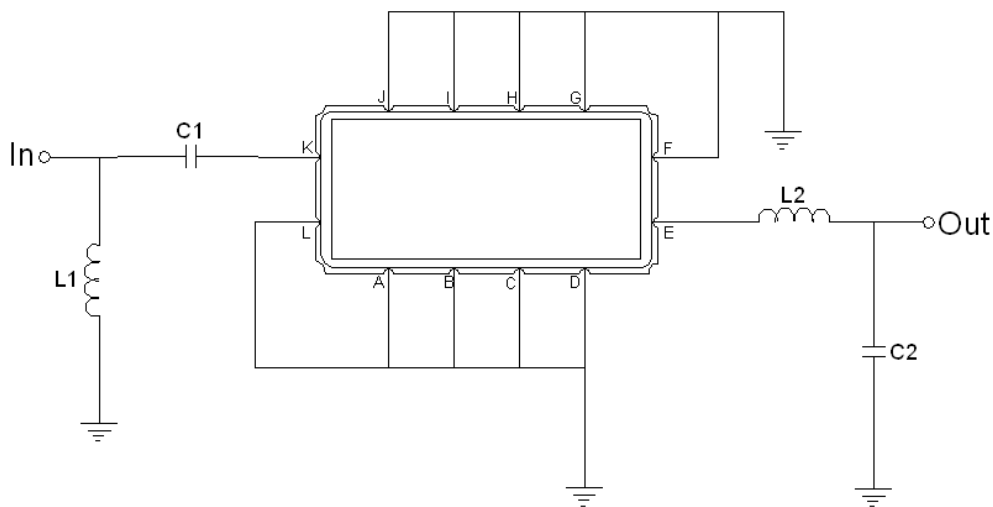
Package Dimensions



- ① SAWNICS: Brand
- ② SL08702A: Model Name
- ③ X : Date Code (Year)
- ④ Y : Date Code (Month)
- ⑤ Z : Date Code (Date)
- : Index Dot

Pin Description	
A, B, C, D, F, G, H, I, J, L	Ground
K	Input
E	Output

Testing Environment



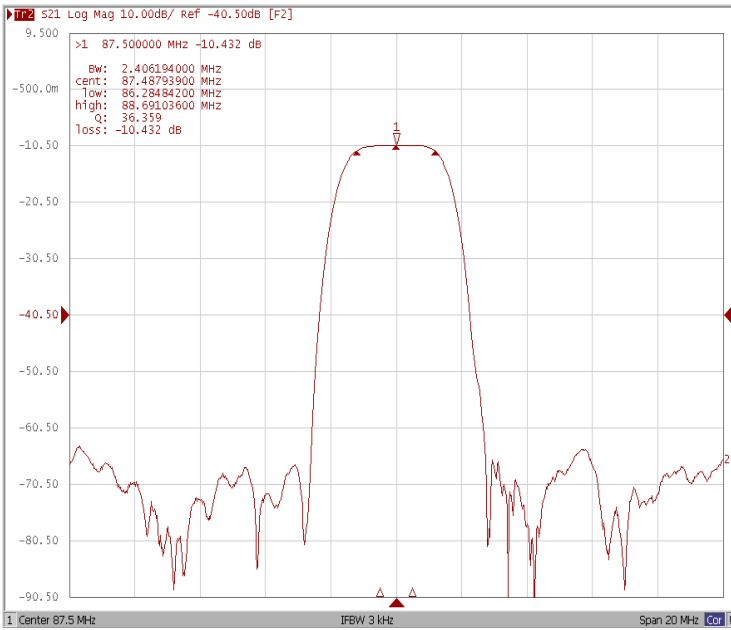
Test Fixture & Values	
Input	L1 = 56 nH, C1 = 160 pF
Output	L2 = 47 nH, C2 = 100 pF
Source/Load Impedance	50 Ω



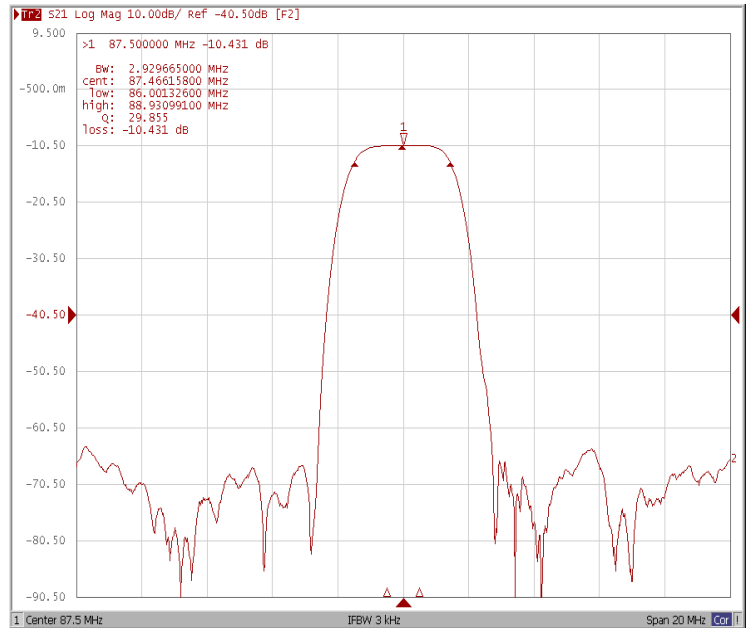
Frequency Characteristics

Frequency Response

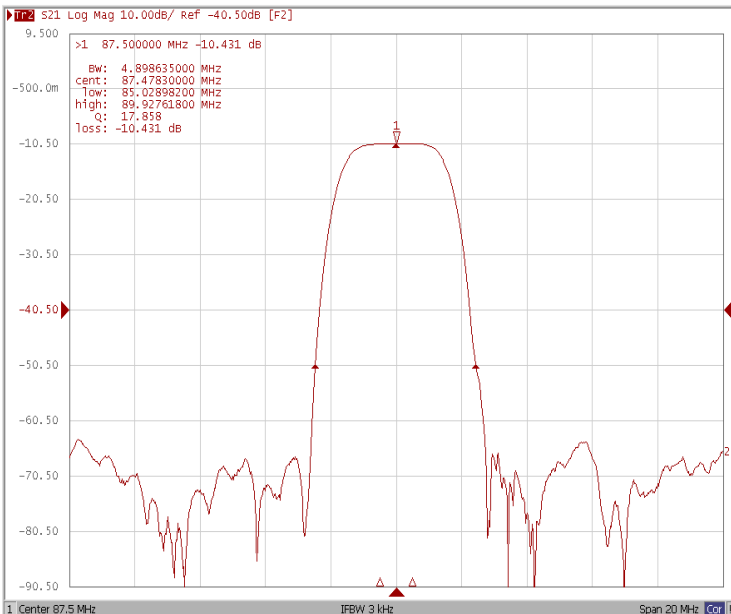
Bandwidth at -1.0 dB



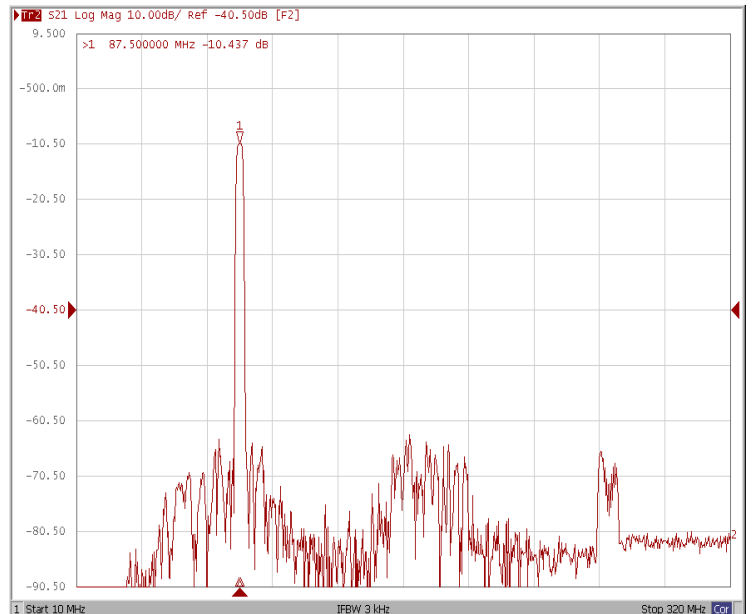
Bandwidth at -3.0 dB



Bandwidth at -40 dB



Wide Band

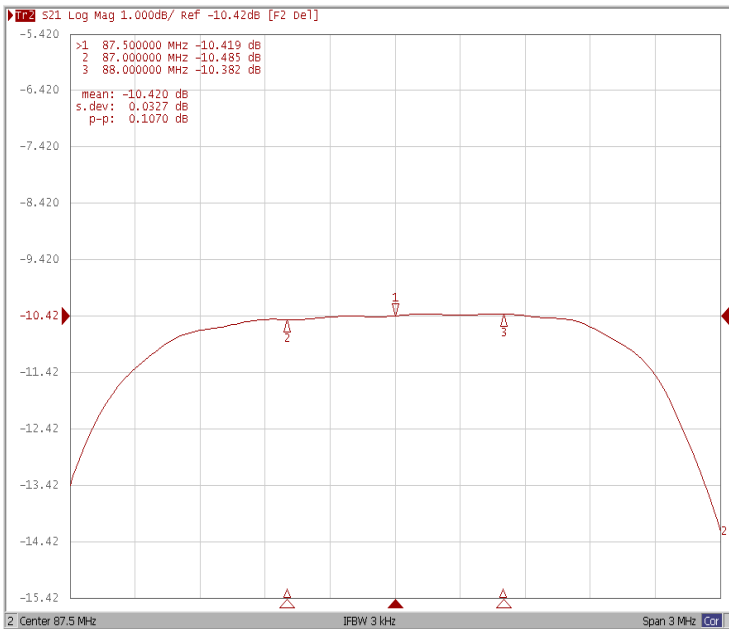




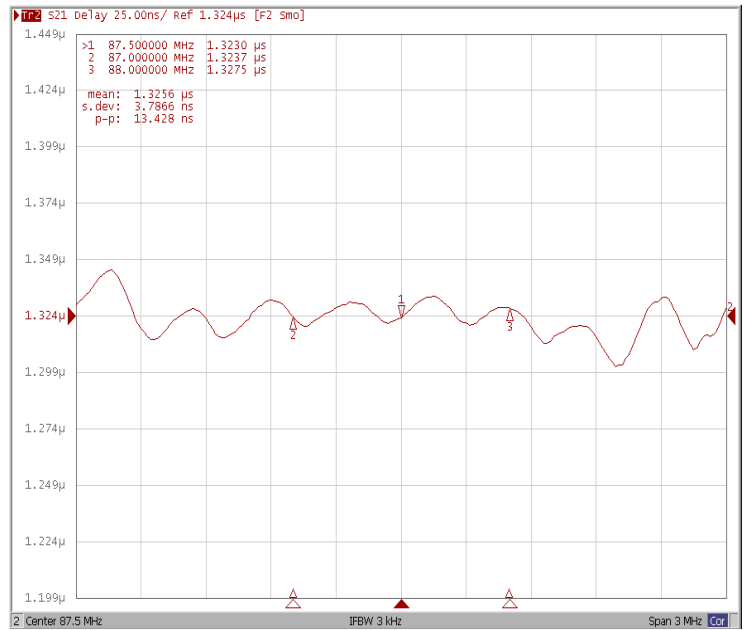
Frequency Characteristics

Frequency Response

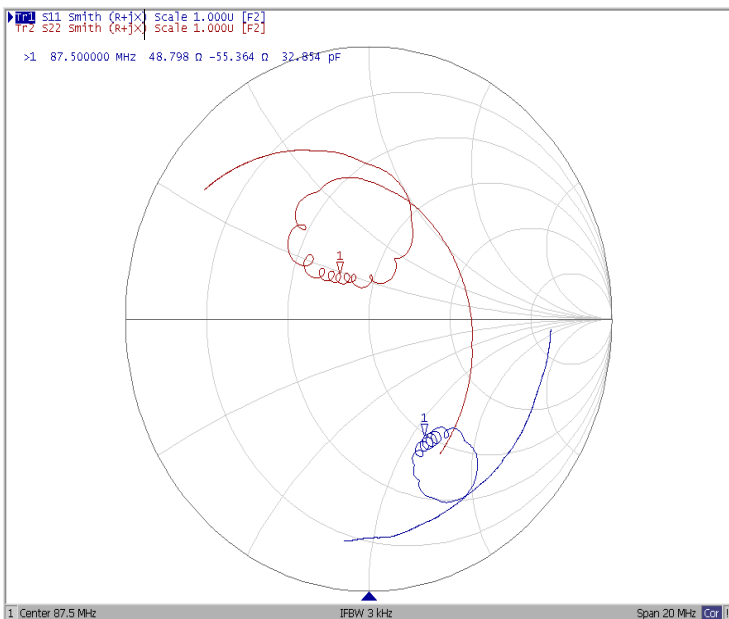
Ripple Variation Fo±500kHz



Group Delay Variation Fo±500kHz MHz



Smith Chart



SWR

